

MEETINGS & EVENTS

at the Iron Horse Hotel



THE IRON HORSE
HOTEL™

THE IRON HORSE HOTEL

A transformed century-old warehouse with exposed Cream City brick, classic post and beam construction and chic interiors, The Iron Horse Hotel offers an exceptional venue that pairs modern sophistication and style with warm Midwestern hospitality. With fresh spaces relevant for today's corporate event planner, The Iron Horse Hotel provides a refuge from the confines of typical hotels.

- Modern stylish boutique hotel
- Unique special event space
- Accommodating events of 10 to 200
- Critically-acclaimed cuisine and creative banquet displays
- Lavish guest rooms with luxury bedding and bath products

Our exceptional staff will cater to your every need and is ready to go above and beyond to create a memorable event. Anything can be done to make your experience amazing. Whether it's hosting a cocktail party in the Library or your annual corporate meeting in our Gallery, our staff will work to accommodate your every wish to make your meeting or event special.

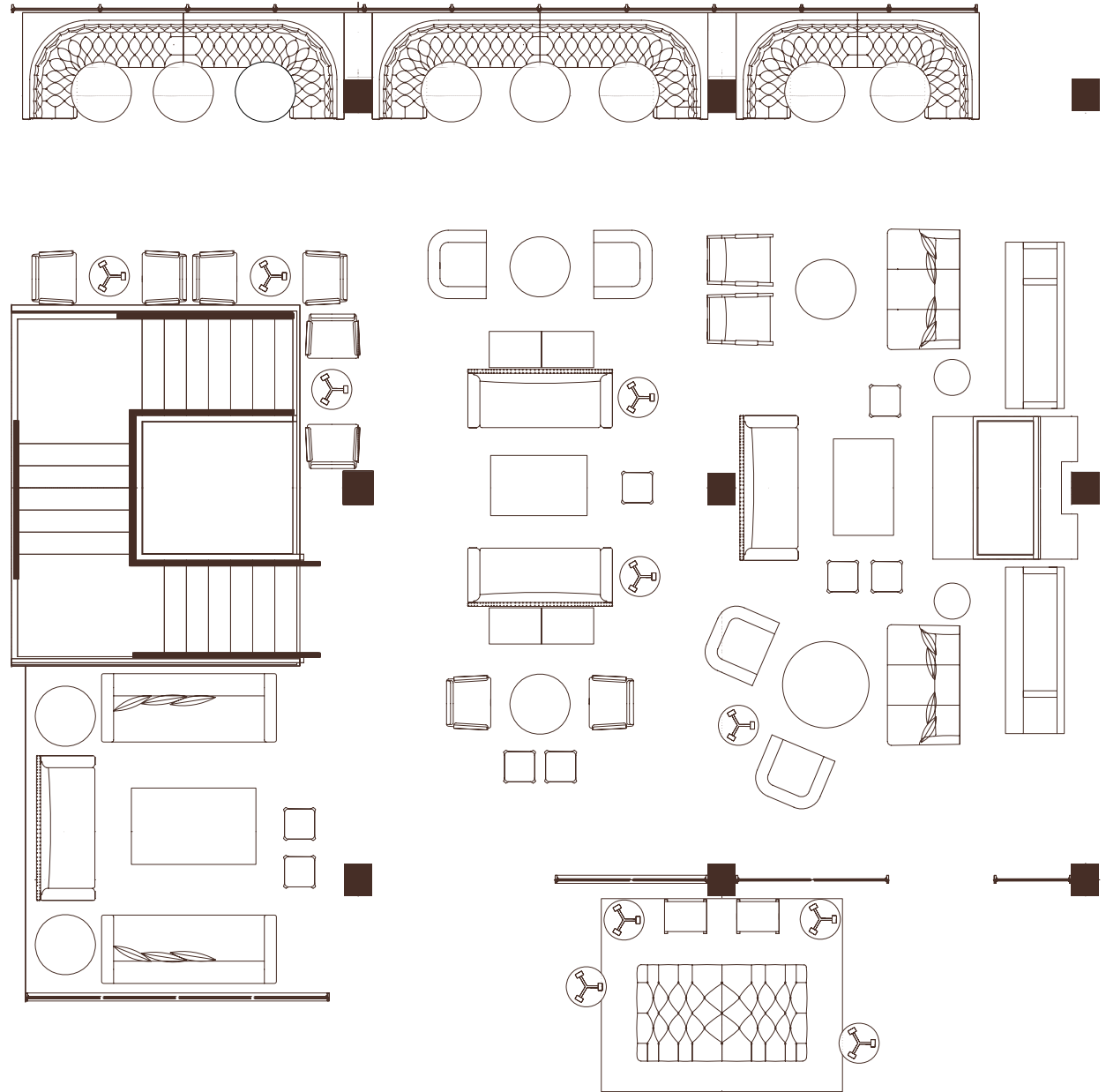


THE LOBBY

Create an unforgettable experience for your private party in the two-story lobby atrium of The Iron Horse Hotel.

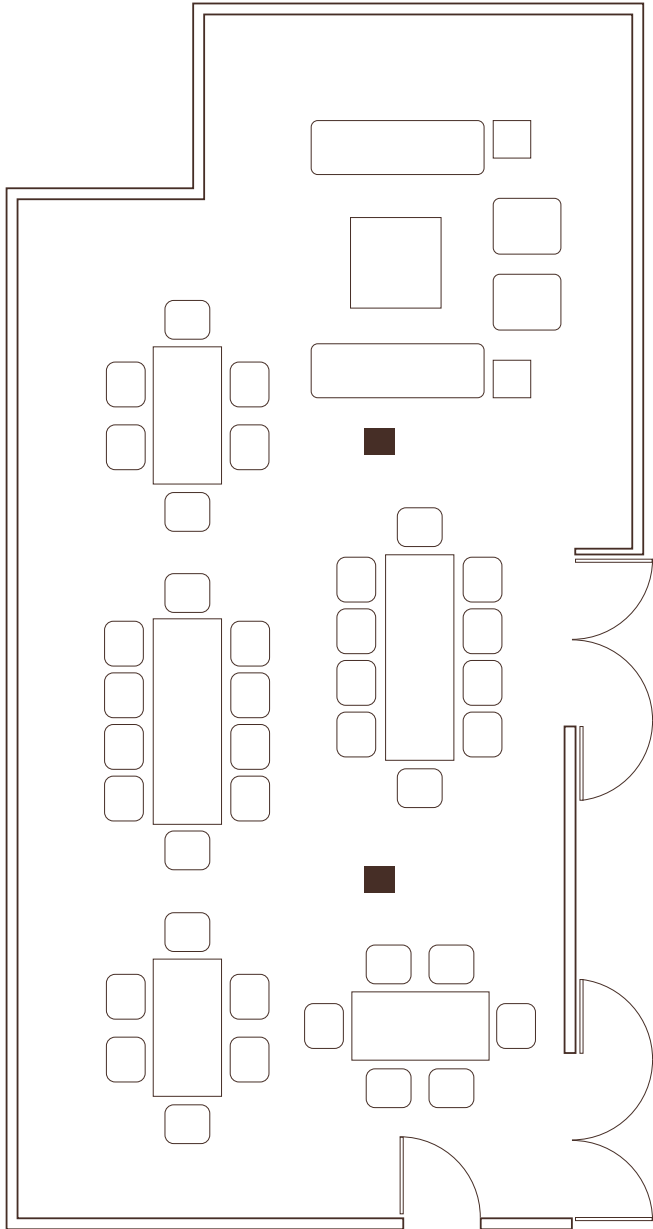
A vintage-modern décor features a mix of custom-made and antique furniture, uniquely configured in intimate social settings. Ideal for cocktail service and informal passed hors d'oeuvres for groups of 10-75 people, this true lobby lounge experience, a commonplace in New York and LA, is delivered with Milwaukee's famous Midwestern friendliness.

Delivered with exceptional customer service from our remarkable staff, treat your guests to an experience not soon forgotten.



MAX CAPACITY:
RECEPTION 75

DIMENSIONS
1500 SQ FT



THE LIBRARY

Treat your guests to a dinner or reception in our warm, intimate Library.

From wine tastings and parties to corporate dinners and receptions, The Library is an impressive venue for small groups from 38 seated to 80 reception style.

Setting a perfect tone for corporate meetings, The Library features a warm welcoming fireplace, antique lighting, seating at Bank of London chairs and an expanse of books.



MAX CAPACITY:
SIT DOWN **38**
RECEPTION **80**

DIMENSIONS
1272 SQ FT (24' x 53')
10' 6" CEILING HEIGHT



7

“YOU NEED THE RIGHT SPOT FOR YOUR MEETING TO CONVEY THE FEELING YOU’RE LOOKING FOR. THAT SPOT IS...THE IRON HORSE HOTEL.”

Milwaukee meeting planner
in *The Business Journal*



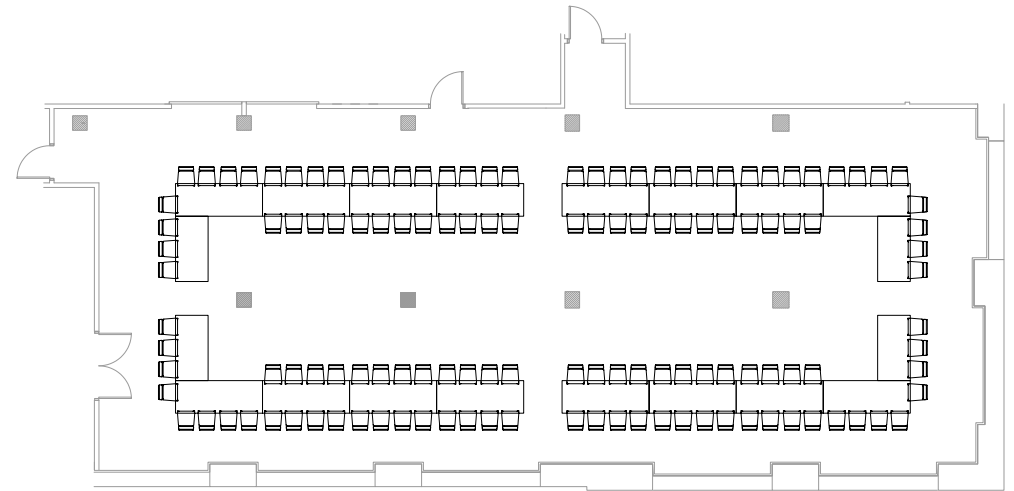
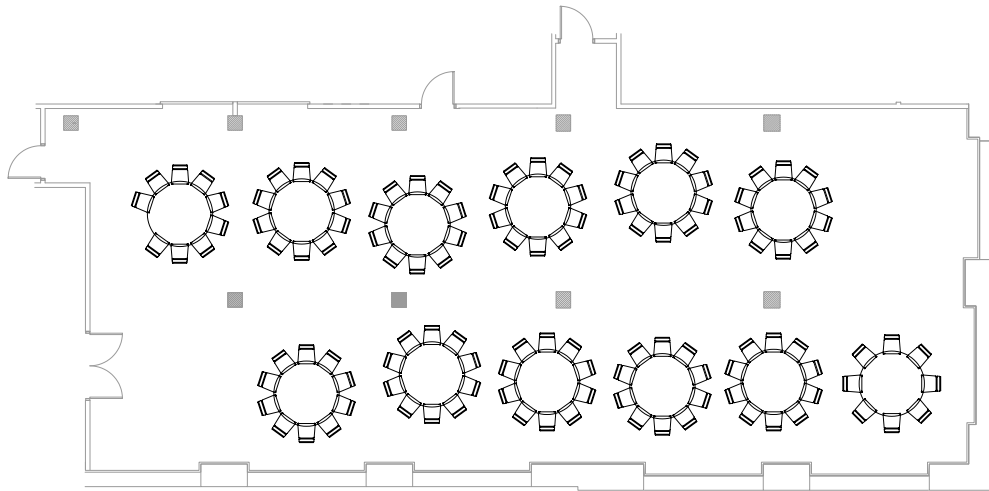
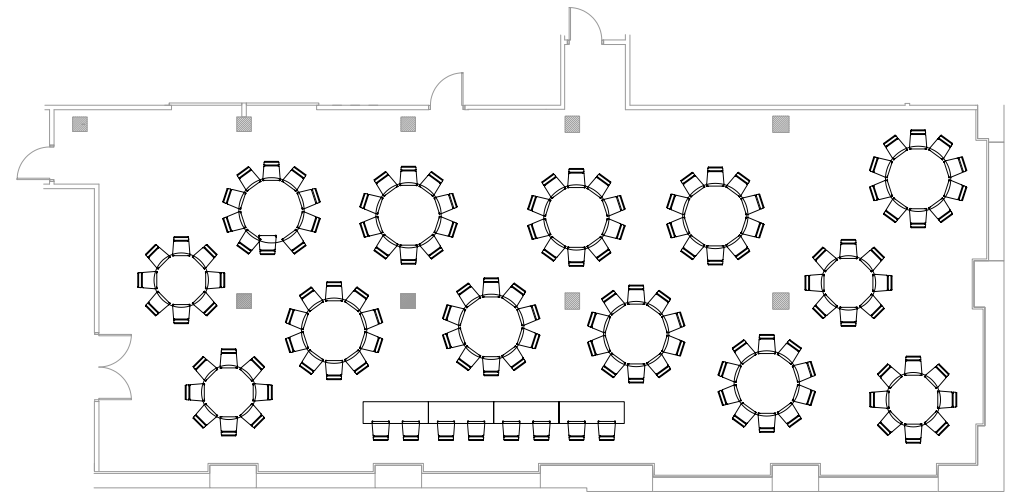
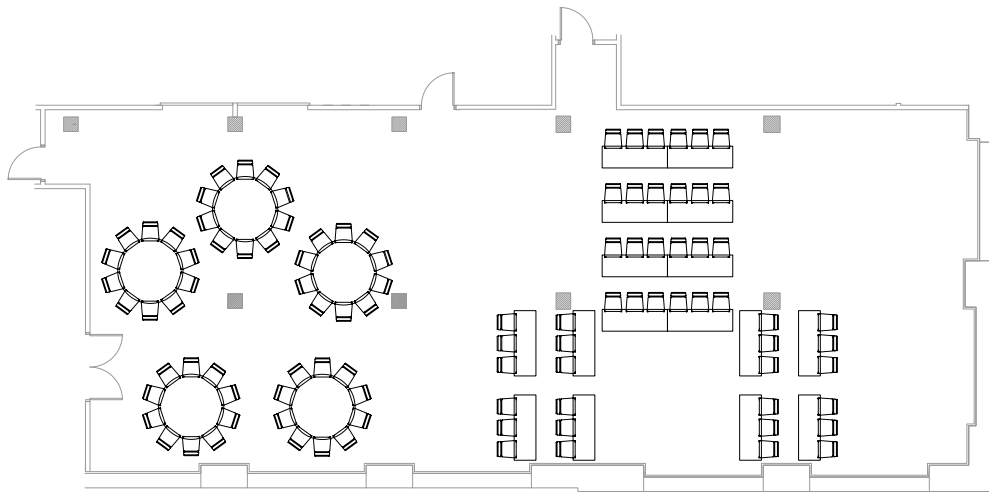
THE GALLERY

A bright open glass staircase leads you down into our lower level special event space called The Gallery.

A spacious pre-function area offers your guests their own private lobby. Perfect for cocktail receptions or as a meet-and-greet staging area, the space is complete with custom artwork and original paintings.

The Iron Horse Hotel’s Gallery is the ideal space for a corporate event, meeting or a social gathering. Old pine timbers, original firedoors and a rotating collection of decorative antique mirrors and works by local artists make for a remarkable space of 2,500 sq. ft.





The room can be configured in a variety of settings including banquet, U-shape, classroom or reception. Capacity is based on your individual room configuration, which we custom design to meet your needs.

MAX CAPACITY:
SIT DOWN **130**
RECEPTION **200**

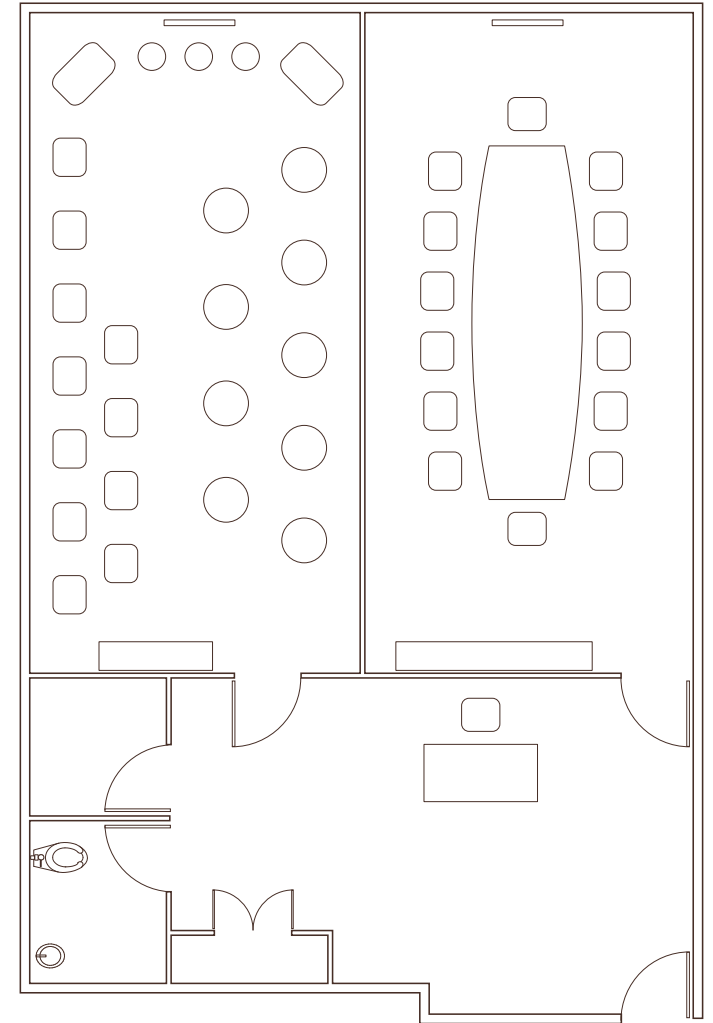
DIMENSIONS:
2400 SQ FT (80' x 30')
9' 6" CEILING HEIGHT

EXECUTIVE SUITE: WAR ROOM & SAND BOX

In need of an exceptional off-site boardroom? The War Room offers privacy and amenities. Get down to business in leather swivel-tilt seating at a custom 12-foot conference table. The adjacent Sand Box offers creative space perfect for breakout sessions and dining.

Each space features Cream City brick walls, high ceilings and an LCD flat screen TV for full A/V use.

The 5th Floor Executive Suite is complete with a reception area, private restroom and coat closet.



MAX CAPACITY:
WAR ROOM:
SIT DOWN **20**
RECEPTION **16**

DIMENSIONS
406 SQ FT (29' x 14') EACH
10' CEILING HEIGHT

SAND BOX:
SIT DOWN **20**
RECEPTION **30**



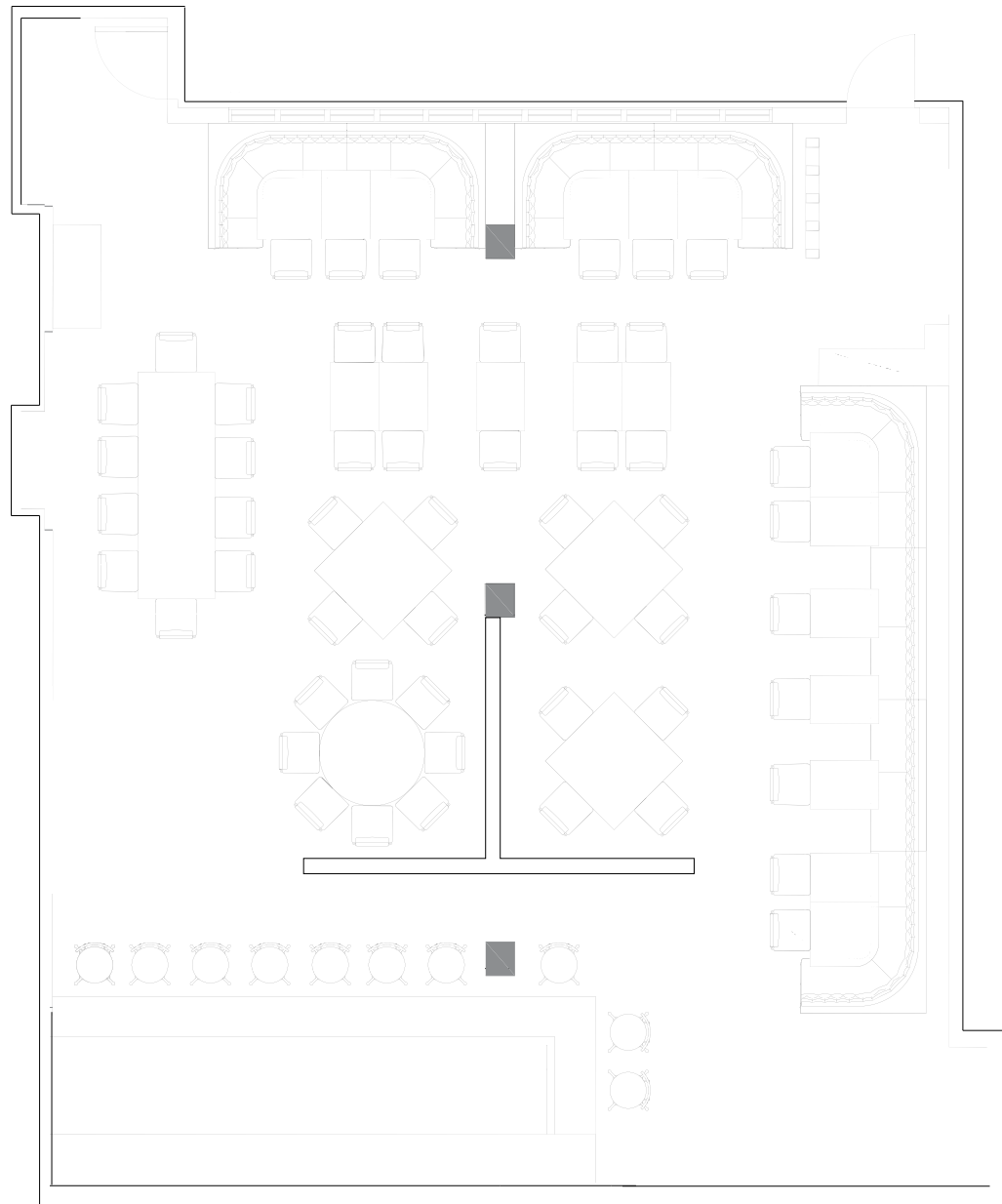
SMYTH

Smyth, The Iron Horse Hotel's rustic American restaurant featuring classic yet innovative seasonal cuisine is available exclusively for private functions.

Complete with full bar and formal seating for up to 65, Smyth's approachable fine dining menu offers guests a cuisine inspired by Executive Chef Jason Gorman. Treat local and out-of-town guests alike to an experience in "New Wisconsin" cuisine.

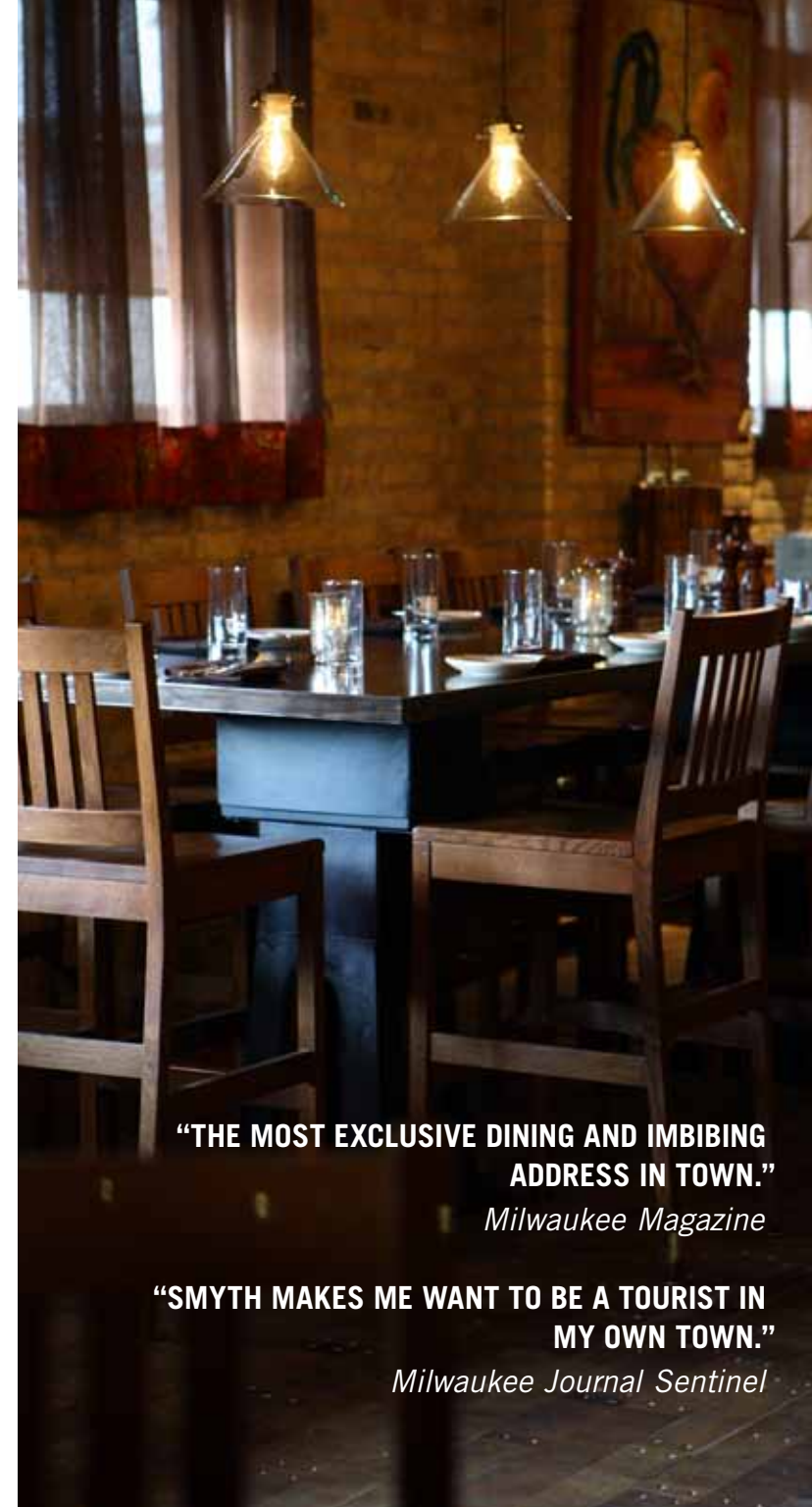
Smyth's décor compliments the menu with 300-year-old heart pine post and beam construction and Cream City brick walls, seating at copper-wrapped reclaimed elm and steel tables and custom leather banquettes. With access to the hotel's sun-drenched outdoor patio, The Yard, Smyth features dramatic lighting and vintage accessories.





MAX CAPACITY:
SIT DOWN **65**
RECEPTION **100**

DIMENSIONS
1496 SQ FT (34' x 44')
10' 6" CEILING HEIGHT



**"THE MOST EXCLUSIVE DINING AND IMBIBING
ADDRESS IN TOWN."**
Milwaukee Magazine

**"SMYTH MAKES ME WANT TO BE A TOURIST IN
MY OWN TOWN."**
Milwaukee Journal Sentinel

THE YARD

Located on the sun-drenched west side of The Iron Horse Hotel is The Yard outdoor lounge and bar. Carved into the hillside with native landscaping and stone outcroppings, this comfy lounge features dramatic views of the downtown and the award-winning Sixth Street Viaduct.

The space features custom sectional seating, a huge outdoor bar made from reclaimed original fire doors and colorful shade sails. Nestled along an historic yet active railroad, your guests will be treated to the slow chug of freight cars.

The Yard is perfect for untraditional corporate meetings and social gatherings. The 4,600 sq. ft. space is a dramatic setting for everything from small gatherings to large events. The Yard features an upper level Pergola, perfect for corporate cocktail parties to private functions of all kinds.



“SITTING UNDER THE ARTFULLY STRUNG LITTLE WHITE GLOBE LIGHTS AND THE AIRY CANOPY OF A FEW CANVAS COVERINGS IS DEFINITELY A RELAXING WAY TO UNWIND AFTER THE WORKDAY. BUT PERHAPS THE YARD'S BEST FEATURE IS ITS VERSATILITY.”

OnMilwaukee.com

ACCOMMODATIONS

Guest rooms at The Iron Horse Hotel are designed to continue your unforgettable experience. Uniquely configured to take full advantage of the architectural features of this historic building, these 100 guest rooms are chic, stylish and include original works from local artists, luxurious bedding and an equally grand shower experience.



Premium Loft

These top-floor rooms take full advantage of our 100-year-old warehouse building with their towering 12-foot, all-wood ceilings, exposed brick walls, wood posts and stunning windows.

Corner Alcove

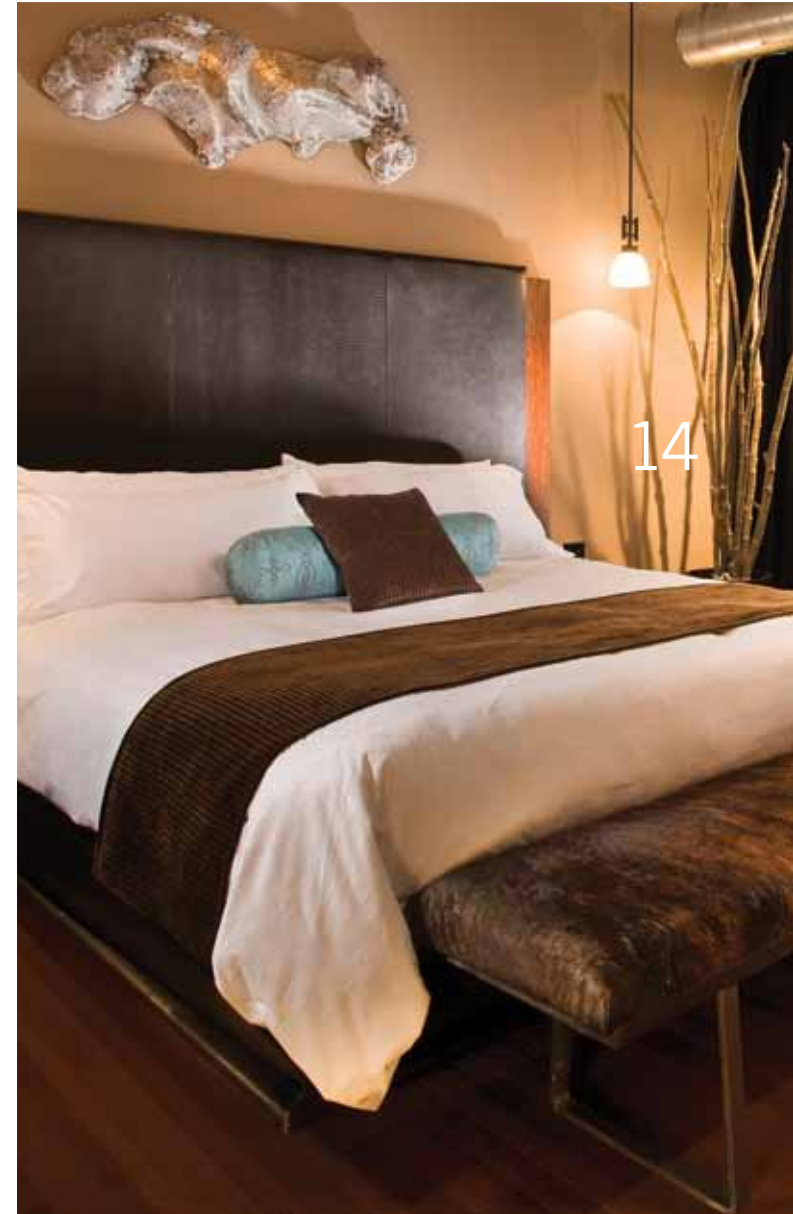
Perfect for anniversaries or as a honeymoon suite, these spacious corner guest rooms feature all the style and furnishings of a cool downtown condo with a luxurious pillow-top King bed and relaxing seating area with sofa, lounge chair and in-room dining area.

Custom Deluxe

These oversize guest rooms are suite size by industry standards (approx. 450 sq. ft.) and include large windows, exposed brick walls and wood timbers.

Features in every room:

- King or two Queen beds with luxurious linens and bedding
- Custom contemporary furnishings including generously scaled desks and deep storage drawers
- Complimentary high-speed Internet & universal connectivity panel
- Lavishly stocked Perlick® beverage refrigerators with 750ml wine bottles
- Bathrooms designed for the female traveler with make-up level lighting, tiled walk-in showers, Kohler® & Kallista® fixtures, H2O® spa products & plush robes



CAN WE STAGE AN OUTDOOR EVENT FOR GROUP FUNCTIONS?

The Yard, our sun-drenched outdoor lounge offers breathtaking views of the Milwaukee River and award winning 6th street viaduct. The Yard offers an unforgettable venue for social gatherings and weddings.

WHAT VENUES DOES THE IRON HORSE HOTEL OFFER FOR SPECIAL EVENTS & MEETINGS?

The Iron Horse Hotel is designed to offer unique venues to stage special events and meetings of all sizes. The offerings include private dining for breakfast, lunch, dinner, meetings & breakout spaces, and cocktail receptions in six different areas:

War Room The Iron Horse Hotel's 5th Floor Executive Suite offers a well-appointed 425 sq. ft. executive boardroom. The War Room has spacious leather seating and an impressive custom conference table for 16. The space is complete with high ceilings, exposed brick and a LCD flat screen TV with full A/V capabilities.

Sand Box Adjacent to the War Room, the Sand Box is perfect for socializing, brainstorming and breakout sessions. Outside the War Room and Sand Box is a business center, ample coat closet, private restroom and table desk for an executive assistant or registration table.

The Library The Iron Horse Hotel's inviting library is a warm, intimate setting for a one of a kind event. The Library features a massive brick fireplace, communal tables, classic Bank of London library chairs and hand painted, antique leather lounge furniture.

The Gallery Original artwork, old pine timbers and exposed brick walls make for a large, remarkable space at nearly 2,400 sq. ft., perfect for a large meeting, social gala, corporate reception or classroom set up.

The Yard The Yard offers an unforgettable venue for corporate meetings and social gatherings. The 4,600 sq. ft. outdoor terrace features space for a dramatic event in an open-air setting.

The Lobby The 1,500 square foot lobby is available for private parties for 10-75 people.

WHAT TYPES OF GUEST ROOMS ARE AVAILABLE?

The Iron Horse Hotel guest rooms are warm and inviting, each having its own charm and story. The rooms are uniquely configured to take full advantage of the architectural features of this historic building, including large windows, exposed Cream City Brick and wood timbers. The rooms feature original artwork by local artists and lavish amenities. A total of 100 non-smoking rooms are available.

CAN WE BRING IN OUR OWN AUDIO/VISUAL EQUIPMENT?

Our staff can coordinate a complete line of state of the art A/V equipment. We can accommodate digital event photography and advanced sound and lighting. Bringing outside equipment is permitted for a fee.

DO YOU OFFER A FITNESS CENTER AND/OR SPA?

Guests of The Iron Horse Hotel are invited to use our

24-hour fitness center, located discretely in the center of the 4th floor. The center has two sport treadmills, two stationary bikes, a stepper/stair climber and an elliptical trainer. The gym also includes open-matted space for stretching, free weights, stability balls, workout aids and two 42" LCD flat screen TVs. The studio features two serene treatment rooms with on-call massage therapy and a variety of spa services.

DO YOU HAVE TOUR BUS PARKING?

With prior approval, secure remote bus parking and indoor bus parking are available for a fee.

DO YOU HAVE AN AIRPORT SHUTTLE?

The Iron Horse Hotel does not offer an airport shuttle, but we are happy to arrange for private shuttle or limousine service to the airport & other locations throughout the city.

Q + A



SPECIFICATIONS

		Dimensions	Pre-Function Space	Capacity: Seated/Reception	Windows	Multi-Level Lighting	Blackout Capabilities	ADA Accessible	In-Room Music	Outdoor Patio	Bar / Lounge	Coat Room
3	LOBBY	1500 sq ft	NO	NA/ 75	NO	NO	NO	YES	YES	NO	NO	NO
5	LIBRARY	1272 sq ft 53' x 24'	NO	38/ 80	YES	YES	YES	YES	YES	NO	NO	TBD
7	GALLERY	2400 sq ft 80' x 30'/9'6"	YES	130/ 200	NO	YES	YES	YES	PRE-FUNCTION ONLY	NO	NO	YES
9	WAR ROOM	406 sq ft 29' x 14'/10'	YES	16/ 20	NO	YES	YES	YES	NO	NO	NO	YES
9	SANDBOX	406 sq ft 29' x 14'/10'	YES	20/ 30	NO	YES	YES	YES	NO	NO	NO	YES
11	SMYTH	1496 sq ft 34' x 44'	NO	65/ 100	YES	YES	YES	YES	YES	YES	YES	YES
13	THE YARD	4600 sq ft 61' x 77'	NO	NA/ 200	OUTSIDE ONLY	OUTSIDE ONLY	NO	YES	YES	YES	YES	NO

A special thanks to our photographers:
Chaz Cruz, Christine Faber, Gina & Tony Photographers,
Pat Goetzinger, Joe Hang, Mark Heffron, Joe Kirschling





500 WEST FLORIDA STREET
MILWAUKEE, WI 53204

THEIRONHORSEHOTEL.COM
1.414.374.IRON (4766)

CATERING@THEIRONHORSEHOTEL.COM